

Bear Valley School's Safety Protocols



At BVS, your health and safety is our priority. Here are the protective measures we'll be taking after we return to school.



Welcome

- Please have students arrive between 8:20 and 8:35 am.
- K-7 will enter through elementary door.
- 8-12 will enter through Secondary door
- Hands will be sanitized and personal items placed in lockers
- Clean shoes that are kept at school will be worn (inside shoes)



Provide Masks

- Masks will be provided for staff and students (grades 8-12) to wear during times in common areas like hallways and washrooms.
- Masks are not mandatory for K-7, but will be available upon request.

Learning Cohorts

- BVS will have two learning cohorts: K-7's with 40 people, and 8-12's with 24 people.
- Individuals within cohorts will be able to share spaces and learning materials. If students and staff need to interact with a member of another cohort, masks and/or social distancing practices will be followed.





Make Space

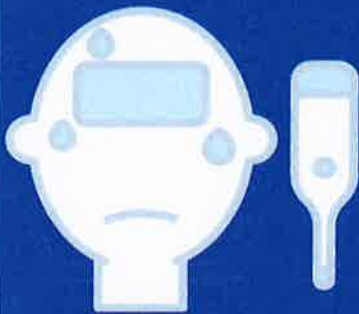
Students and staff will follow the social distancing six-foot rule and all other posted guidelines while in and on school property.

- Specific bathrooms will be assigned to cohorts (K-7 by room 2; 8-12's by the gym and Neutral Gender will be available to anyone). Washrooms will be limited to 2 students at a time and signs will be posted.
- Lunch Supervision - cohorts will eat in designated spaces and not share spaces during the 'play-time.' K-7's will be outdoors and 8-12's are encouraged to take a break and go home for lunch or mingle in the Learning Common.
- There will be no sharing of food at school or from home.
- Food programs will continue at BVS, but follow strict guidelines for preparation and handling.



Health Screening

- All workers and students who have symptoms of COVID-19 or have travelled outside Canada in the last 14 days must stay home and self-isolate in accordance with guidance from the BC Centre for Disease Control. Self-isolation is also advised for those who are considered a close contact of a confirmed case.
- Parents and caregivers must assess their child daily for symptoms of common cold, influenza, COVID-19, or other infectious respiratory disease before sending them to school. If a student develops symptoms while at home, parents or caregivers must keep their child at home until they have been assessed by a health care provider to exclude COVID-19 or other infectious diseases, and their symptoms have resolved.
- Students who develop symptoms while at school will be isolated in medical room until parent can pick up child. The child will be required to wear a mask.

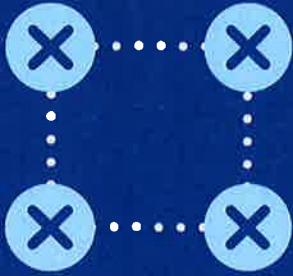


Please ensure contact information is up to date

Visitor Guidelines

- Outside visitors by appointment only.
- School doors will remain locked - please phone 250 636 2238 if your child is late so we may open the door upon arrival.
- All visitors will sign in and follow entry posted entry procedure (sanitize).





Floor Markings

- We will be marking six-foot positions with brightly coloured duct tape and stickers so all have a sense of a safe distance to maintain from each other while waiting in lines for bathroom, office, and library check-out.



Fountains

- Please bring a water bottle to school and take home to wash every night.
- Water fountains are off-limits, but the water bottle filling station may be used.



Custodial / Cleaning

- Extra soap and paper towels available
- Extra custodian will sanitize touch surfaces at least twice a day.
- Deep cleaning nightly



Handwashing

- Access to regular hand washing with soap, hand sanitizer and disinfectant wipes will be provided and all common areas will be cleaned on a regular basis.
- Students and staff are required to wash hands on arrival and when transitioning to new areas. (Check out our new hand washing stations!)



Together, we can learn and stay safe!

Please adhere to these strict guidelines to keep our people safe onsite. We know that it'll be challenging to adapt to the New Normal. However, it'll require our collective effort to make our school a safe place to operate.